



# AVIATION Refuelers



## Quality Workmanship

Our full line of aviation refuelers are engineered and designed for maintenance-friendly, trouble-free operation.

- ▶ Welded fittings and joints eliminate leaks created by clamping
- ▶ Welders are certified to the American Society of Mechanical Engineering Code
- ▶ 150+ point QC/QA quality checklist

## Increased Safety

Our staff provides hands-on training to improve your crew's efficiencies. Safety is in the components, our attention to these key details keeps your operators safe.

- ▶ Steel H-brackets secure and stabilize the tank to chassis
- ▶ Air Emergency shutoff system
- ▶ Emergency brake override system in cab

## Easy Availability

Increased manufacturing capacity allows more flexibility at the factory.

- ▶ Dependable lead times
- ▶ Delivery to match your needs
- ▶ Able to customize your project

# Aviation Refuelers

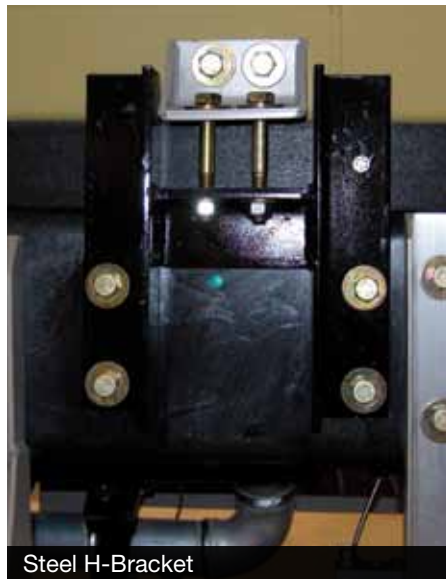
Freedom From Old Technology



5,000 Gallon Aviation Refueler



Certified Welder



Steel H-Bracket



10,000 Gallon Aviation Refueler

## Reduced Downtime.

“ Some of our bases have just one unit, so **eliminating downtime is important**. When the truck is down so is the aircraft, or we’re forced to purchase fuel at full cost. It’s very **obvious** we’re **saving dollars** with **less downtime**. ”

United States Coast Guard  
Elizabeth City, NC

# Refueler Features

2,000 – 3,000 – 5,000 – 10,000 Gallon



3,000 Gallon Aviation Refueler



Bottom Loading



Scully Overfill Protection



Lights



Welded Piping



Vacuum Gauge



Single Point Hose Reel



Static Grounding Reels

# Aviation Refuelers

2,000 – 3,000 – 5,000 – 10,000 Gallon

Chassis Options	Code	Gallons			
		2K	3K	5K	10K
Air Conditioning	AC	x	x	x	x
Front GAWR 14,000	AS14		x		
Front GAWR 16,000	AS16			x	
Alternator 130 AMP Min	A14	x	x	x	
Air Transportability	ATR	CALL			
All Wheel Drive	AWD	CALL			
Tool Compartment	BTC	x	x	x	
Back Up Alarm	BUA	x	x	x	x
Custom Paint Exterior Cab	CPT	x	x	x	x
Drive Controlled Locking Differential	D1	x	x	x	
Rear Axle Traction Control, Automatic	D3	x	x	x	
Air Driver's Seat	DSS	x	x	x	x
Air Seats	DSS2	x	x	x	
Block Heater	EH	x	x	x	x
Engine Hour Meter	EHM	x	x	x	
Emergency Equipment	FEX	x	x	x	x
Fuel Fired Engine Preheat	FFP	x	x	x	
Heated Fuel/Water Separator	FFS	x	x	x	
Diesel Engine Compatible With Jet Fuel	FJP	CALL			
Coolant Protection to -40° F	H4	x	x	x	
Military Service Marking	MIL	x	x	x	x
Mud & Snow Tires, Rear Axles	MS	x	x	x	
Chassis Parts List & Shop Manuals Electronic	PSME	x	x	x	
Rear GAWR 46,000 LB	R46			x	
Motorized Right Side Mirror	RM3	x	x	x	
Heated Flat Mirrors	RM4	x	x	x	
Rear Tow Hooks	RTH	x	x	x	
Engine Oil Heater, Non OEM	SEHB	x	x	x	
In-Tank Fuel Warmer	SEHD				
Metric Odometer	SK		x	x	
Fuel Warmers, In-Line Electrical	SEHE				
Rust-Proofing FED-STD-297	SRP	x	x	x	
Spare Tire Assembly, Front	STA	x	x	x	x
Spare Tire Assembly, Rear	STB	x	x	x	
Spare Tire Carrier	STC	x	x	x	
Brake Controls for Use From Towing	TBT	x			
Tools, Hyd Jack, Wheel Wrench & Handle	TJ	x	x	x	x
Trailer Towing Package	TTP	x			
Wheels Same Color as Cab	WLP	x	x	x	
Automatic Transmission Min. 5 spd	AT	x	x	x	x

Tank & Equipment Options	Code	Gallons			
		2K	3K	5K	10K
Tank & Equipment Options	Code				
Additive Injector System	AIS	x	x	x	x
Replace Open Platform with Aluminum Cabinet	CAB1	x	x	x	
CCR Nozzle	CCR	x	x	x	x
Paint Tank & Equipment	CPT2	x	x	x	x
D1 Single Point Nozzle in Lieu of D2	D1N	x	x	x	x
Decals Reflective	DECN	x	x	x	x
Drop Hoses and Storage Tubes	DH	x	x	x	x
De-fuel Thru Stub Unmetered	DS1	x	x	x	x
De-fuel Thru SP Hose and Stub Metered	DS2	x	x	x	x
Delete Onsite Training	DTRN	x	x	x	x
Emergency Breakaway Connector (Per Reel)	EB		x	x	x
Scully "Go Anywhere" Sensor	EPS	x	x	x	x
Electric Hose Reel	EREEL	x	x	x	x
Two 20 lb. Dry Chemical Fire Extinguishers	EXT	x	x	x	x
Filter 5th 2-Stage Military	F52M	x	x	x	x
Flashing Beacon on Top of Tank	FB	x	x	x	x
Flood Light	FLIG	x	x	x	x
2" Opening in Tank for Electronic Probe	FLS2	x	x	x	x
Fully Skirted Unit Aluminum Tank	FSKT	x	x	x	
Components Rated to 300 GPM	G300	x	x	x	x
Additional Ground Reel	GR	x	x	x	x
Add 1 1/2" x 50' Hose & Reel	HR2	x	x	x	x
Meter Truck Ticket	MTP	x	x	x	x
Tank & Equipment Operator & Parts Manuals Printed	PSM2	x	x	x	x
Relaxation Chamber Rated for 200 GPM	RC1	x	x	x	x
Relaxation Chamber Rated for 300 GPM	RC2	x	x	x	x
Speed Ends	SPDE	x	x	x	x
Metal Tank Chart, Tank Stick with Storage Bracket	TAST	x	x	x	x
Temperature Compensator on Meter	TC	x	x	x	x